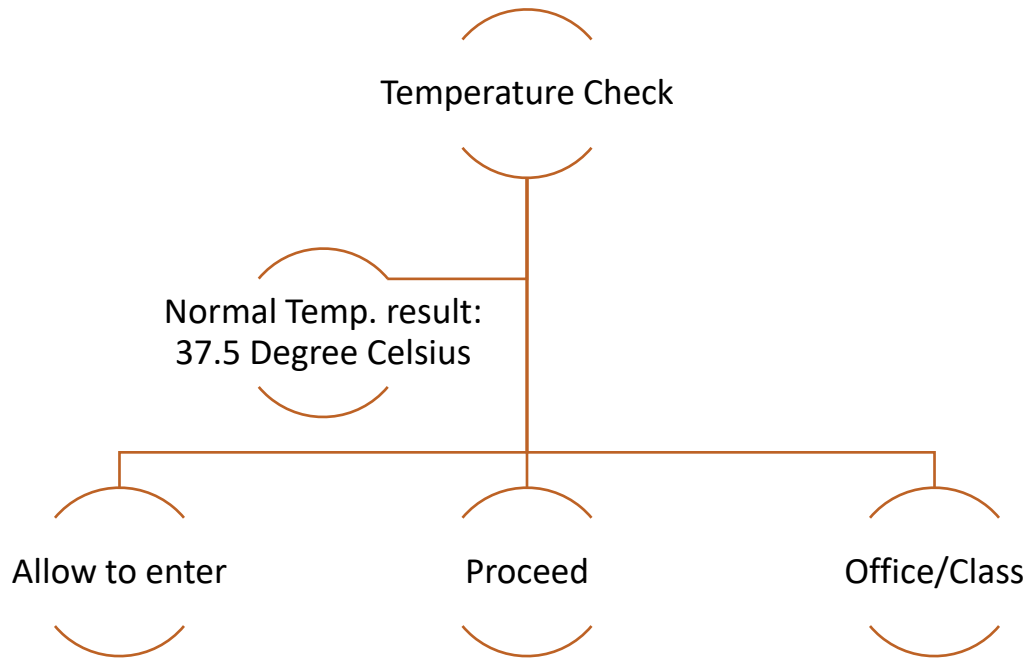
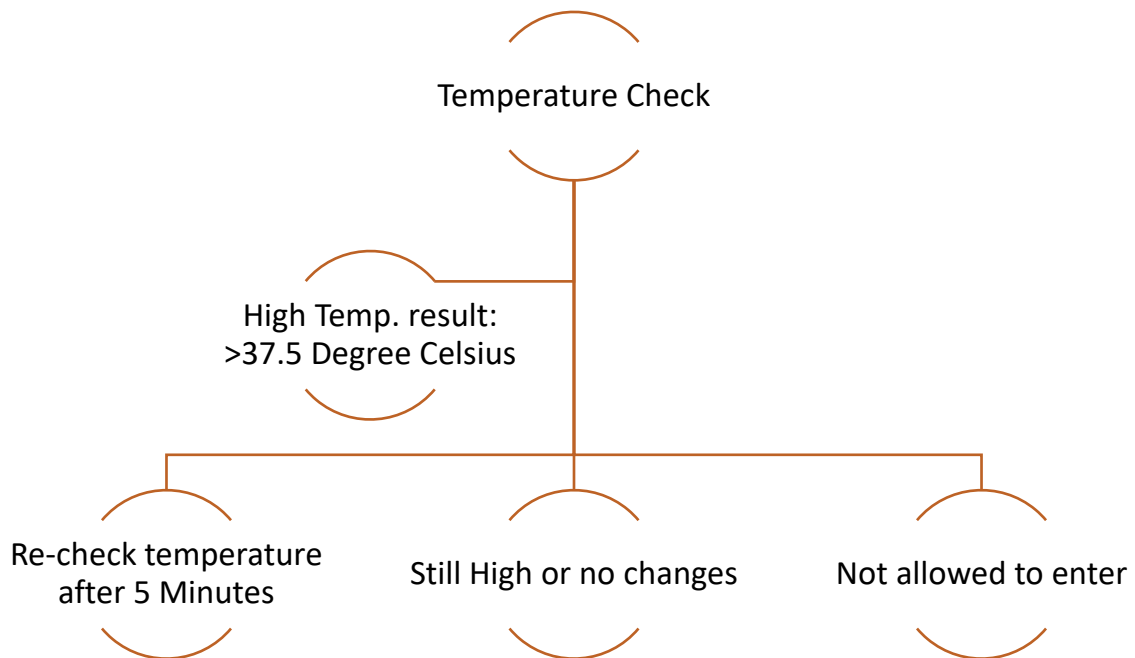


Temperature Assessment

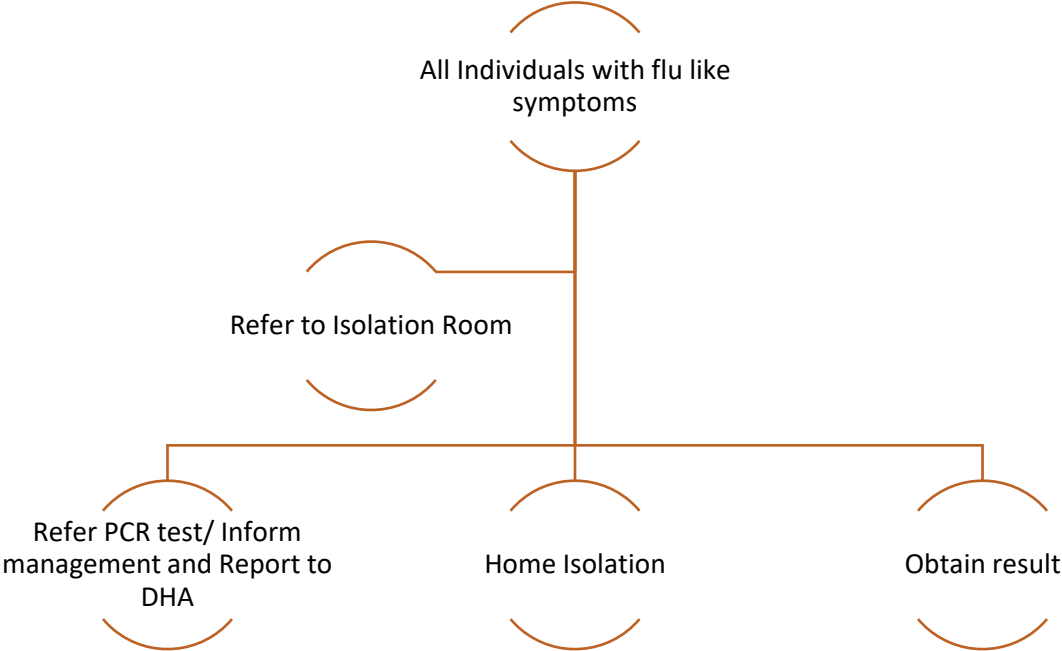
(Normal Temperature Result)



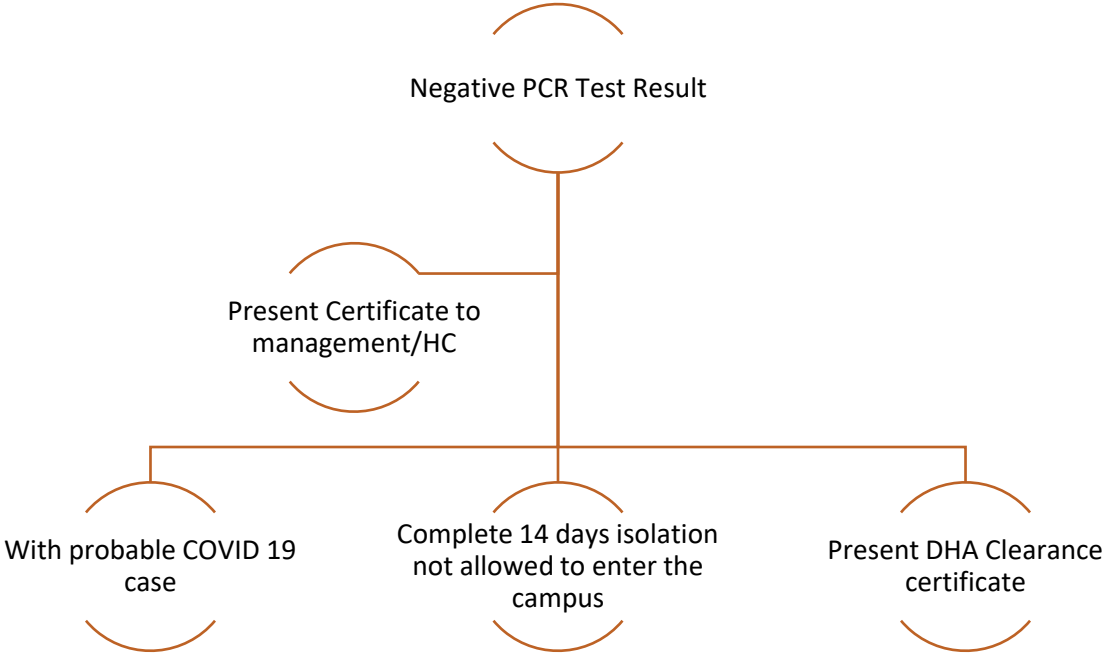
(High Temperature Result)



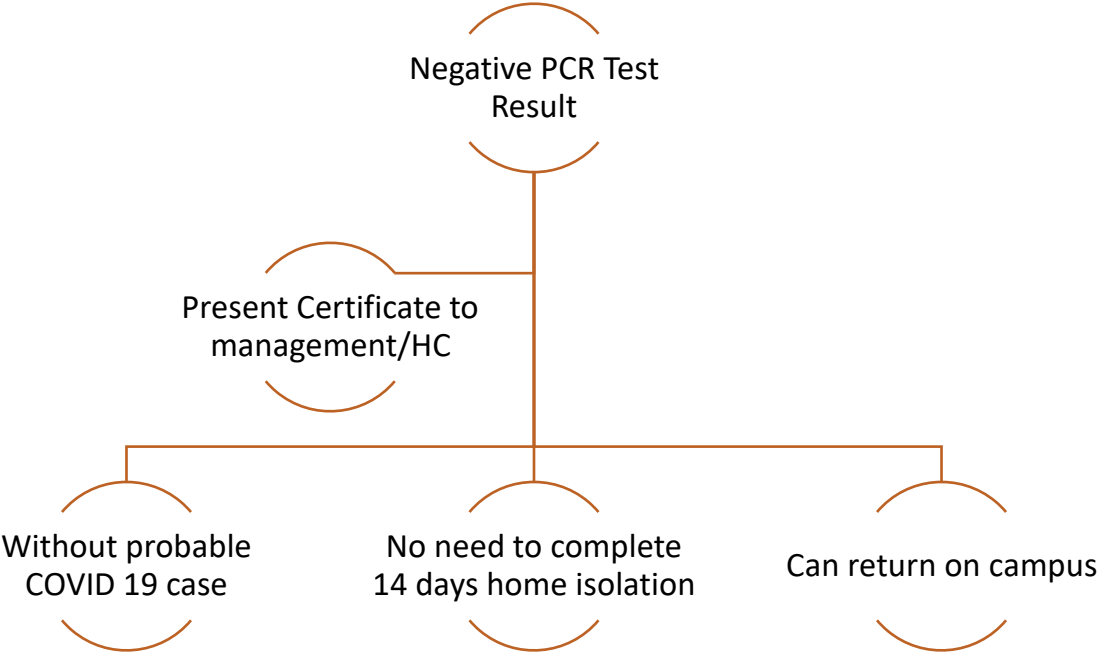
In campus with flu like symptoms



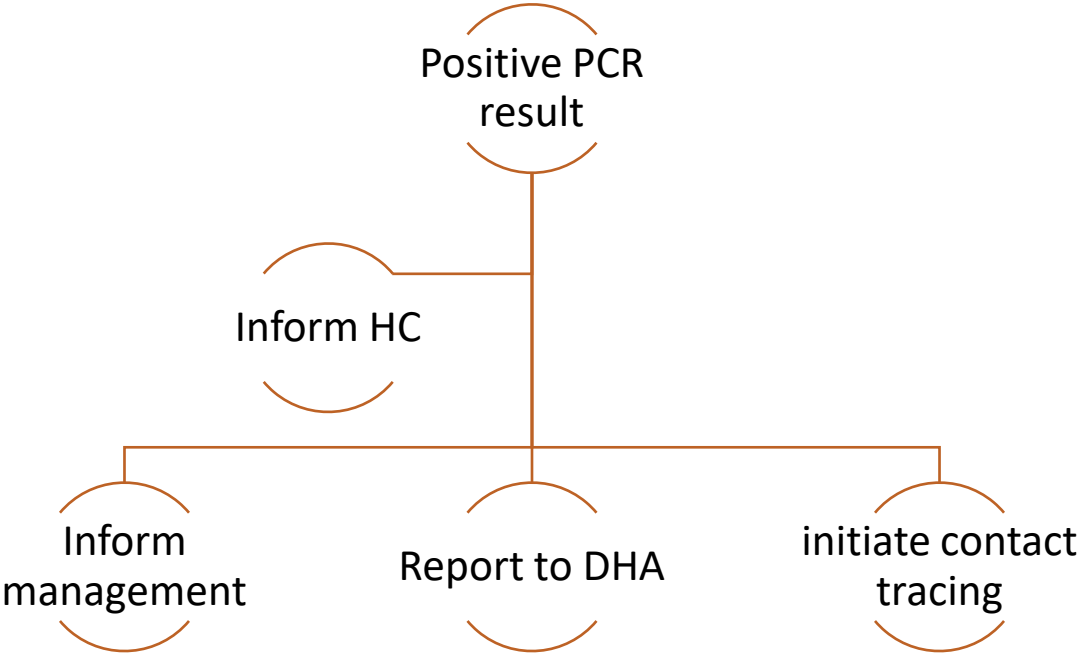
PCR Test Negative result with probable COVID 19 Case



PCR Test Negative result without probable Covid 19 case



PCR Test with Positive Result (Employees/ Students)



Note: Patients details will be communicated confidentially.

Contact Tracing

